


PIETBOON

BLOOM

HIGH PERFORMANCE FABRICS P3

FEATURES

COMPOSITION	54% POLYACRYLIC, 46% POLYESTER
WIDTH	140 CM
WEIGHT	740 G/LM
ABRASION	100.000 MARTINDALE
COLOUR FASTNESS	4/5 DEPENDS ON COLOUR
CLEANING	

OR VISIT pietboon-care.nl

CAL TB 117 TEST	FAIL
BS 5852 0	FAIL
BS 5852 1	FAIL
DIN EN ISO 1021 PART I	FAIL
DIN EN ISO 1021 PART II	FAIL
NFPA 260	FAIL
WATER REPELLENT	YES

SAMPLES



BLOOM 01-407



BLOOM 02-413



BLOOM 01-405



BLOOM 03-404



BLOOM 04-406



BLOOM 05-403



BLOOM 06-411



BLOOM 07-410



BLOOM 08-409



BLOOM 09-408



BLOOM 10-402



BLOOM 11-401



BLOOM 12-412

PIETBOON

CLIFF

HIGH PERFORMANCE FABRICS

FEATURES

NR.	01-10029	04-5 07-11	05-43	06-71 08-82	11-77	12-3729 14-3792137
COMPOSITION	100% PC	88% PP 12% PL	88% PP 12% PL	83% PP 17% PL	83% PP 17% PL	100% PC
WIDTH	140	140	140	140	140	140
WEIGHT	385 G/LM	648 G/LM	658 G/LM	500 G/LM	470 G/LM	356 G/LM
ABRASION (MARTINDALE)	30.000	30.000	30.000	25.000	40.000	30.000
COLOUR FASTNESS	ISO 4-5	ISO 4-5	ISO 4-5	ISO 4-5	ISO 4-5	ISO 4-5
CLEANING FOR MORE DETAILS: pietboon-care.nl						
CALL TB 117	FAIL	PASS	PASS	PASS	PASS	PASS
BS 5852 0	FAIL	PASS	PASS	PASS	PASS	FAIL
BS 5852 1	FAIL	FAIL	FAIL	FAIL	FAIL	FAIL
DIN EN ISO PART I	FAIL	FAIL	FAIL	FAIL	FAIL	FAIL
DIN EN ISO PART II	FAIL	FAIL	FAIL	FAIL	FAIL	FAIL
NFPA 260	PASS	FAIL	FAIL	FAIL	FAIL	PASS
WATER REPELLENT	YES	NO	NO	NO	NO	YES

ALL THE HIGH PERFORMANCE FABRICS ARE WATER RESISTANT

SAMPLES



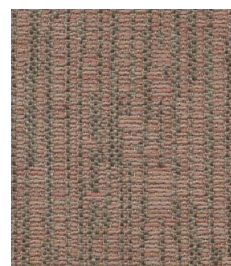
CLIFF
01-10029 **P2**



CLIFF
04-5 **P3**



CLIFF
05-43 **P3**



CLIFF
06-71 **P2**



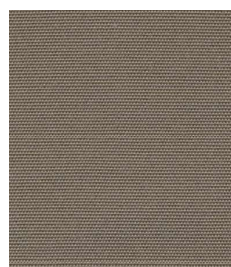
CLIFF
07-11 **P3**



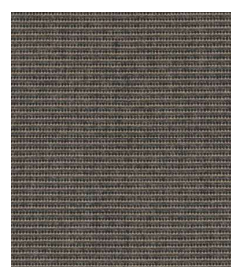
CLIFF
08-82 **P2**



CLIFF
11-77 **P1**



CLIFF
12-3729 **P2**





CLIFF
14-3792137 **P2**

PIETBOON

FOREST

HIGH PERFORMANCE FABRICS

FEATURES

NR.	01-01 03-05, 05-04, 07-03, 09-10, 11-09, 13-11, 15-02	02-17, 04-271, 06-272, 08-02, 10-276, 12-273, 14-274, 16-1000
COMPOSITION	100% PC	100% PC
WIDTH	140	140
WEIGHT	1080 G/LM	614 G/LM
ABRASION (MARTINDALE)	40.000	35.000
COLOUR FASTNESS	ISO 4-5	ISO 4-5
CLEANING FOR MORE DETAILS: pietboon-care.nl		
CALL TB 117	FAIL	PASS
BS 5852 0	FAIL	PASS
BS 5852 1	FAIL	PASS
DIN EN ISO PART I	FAIL	FAIL
DIN EN ISO PART II	FAIL	FAIL
NFPA 260	FAIL	FAIL
WATER REPELLENT	NO	NO

ALL THE HIGH PERFORMANCE FABRICS ARE WATER RESISTANT

SAMPLES



FOREST
01-01 **P3**



FOREST
02-17 **P2**



FOREST
03-05 **P3**



FOREST
04-271 **P2**



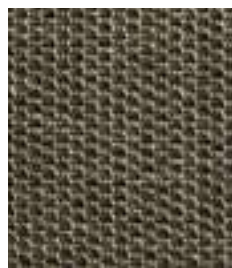
FOREST
05-04 **P3**



FOREST
06-272 **P2**



FOREST
07-03 **P3**



FOREST
08-02 **P2**



FOREST
09-10 **P3**



FOREST
10-276 **P2**

PIETBOON

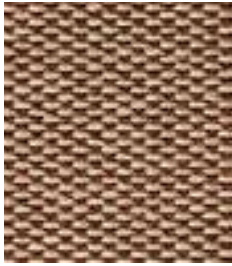
FOREST

HIGH PERFORMANCE FABRICS

SAMPLES



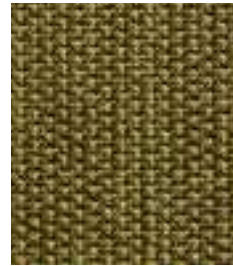
FOREST
11-09 **P3**



FOREST
12-273 **P2**



FOREST
13-11 **P3**



FOREST
14-274 **P2**



FOREST
15-02 **P3**



FOREST
16-1000 **P2**

PIETBOON

MIST

HIGH PERFORMANCE FABRICS

FEATURES

NR.	01-40	02-80 07-82 10-76	03-5	04-77	05-3741	06-52	08-6
COMPOSITION	88% PP 12% PL	83% PP 17% PL	97% PP 3% PL	83% PP 17% PL	100% PC	83% PP 17% PL	88% PP 12% PL
WIDTH	140	140	140	140	140	140	140
WEIGHT	658 G/LM	470 G/LM	900 G/LM	500 G/LM	356 G/LM	460 G/LM	648 G/LM
ABRASION (MARTINDALE)	30.000	40.000	50.000	25.000	30.000	30.000	30.000
COLOUR FASTNESS	ISO 4-5	ISO 4-5	ISO 4-5	ISO 4-5	ISO 4-5	ISO 4-5	ISO 4-5
CLEANING FOR MORE DETAILS: pietboon-care.nl							
CALL TB 117	PASS	PASS	PASS	PASS	PASS	PASS	PASS
BS 5852 0	PASS	PASS	PASS	PASS	FAIL	PASS	PASS
BS 5852 1	FAIL	FAIL	FAIL	FAIL	FAIL	FAIL	FAIL
DIN EN ISO PART I	FAIL	FAIL	FAIL	FAIL	FAIL	FAIL	FAIL
DIN EN ISO PART II	FAIL	FAIL	FAIL	FAIL	FAIL	FAIL	FAIL
NFPA 260	FAIL	FAIL	FAIL	FAIL	PASS	FAIL	FAIL
WATER REPELLENT	NO	NO	NO	NO	YES	NO	NO

ALL THE HIGH PERFORMANCE FABRICS ARE WATER RESISTANT

SAMPLES



MIST
01-40 **P3**



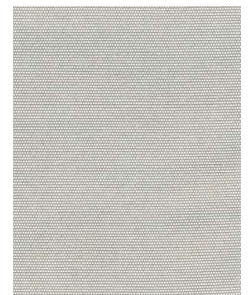
MIST
02-80 **P1**



MIST
03-5 **P3**



MIST
04-77 **P2**



MIST
05-3741 **P2**



MIST
06-52 **P1**



MIST
07-82 **P1**



MIST
08-6 **P3**



MIST
10-76 **P1**

PIETBOON

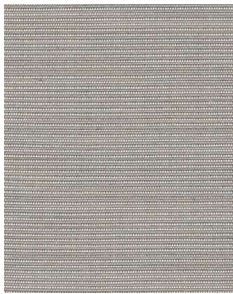
NORTH SEA HIGH PERFORMANCE FABRICS

FEATURES

NR.	01-3706 10-3737	02-55 11-61	03-3	04-3	08-81	09-23 13-22	12-4	14-10059	
COMPOSITION	100% PC	83% PP 17% PL	88% PP 12% PL	88% PP 12% PL	83% PP 17% PL	100% PP	97% PP 3% PL	100% PC	
WIDTH	140	140	140	140	140	140	140	140	
WEIGHT	356 G/LM	460 G/LM	658 G/LM	648 G/LM	470 G/LM	1.022 G/LM	900 G/LM	385 G/LM	
ABRASION [MARTINDALE]	30.000	30.000	30.000	30.000	40.000	100.000	50.000	30.000	
COLOUR FASTNESS	ISO 4-5	ISO 4-5	ISO 4-5	ISO 4-5	ISO 4-5	ISO 4-5	ISO 4-5	ISO 4-5	
CLEANING FOR MORE DETAILS: pietboon-care.nl									
CALL TB 117	PASS	PASS	PASS	PASS	PASS	PASS	PASS	FAIL	
BS 5852 0	FAIL	PASS	PASS	PASS	PASS	PASS	PASS	FAIL	
BS 5852 1	FAIL	FAIL	FAIL	FAIL	FAIL	FAIL	FAIL	FAIL	
DIN EN ISO PART I	FAIL	FAIL	FAIL	FAIL	FAIL	FAIL	FAIL	FAIL	
DIN EN ISO PART II	FAIL	FAIL	FAIL	FAIL	FAIL	FAIL	FAIL	FAIL	
NFPA 260	PASS	FAIL	FAIL	FAIL	FAIL	FAIL	FAIL	PASS	
WATER REPELLENT	YES	NO	NO	NO	NO	NO	NO	YES	

ALL THE HIGH PERFORMANCE FABRICS ARE WATER RESISTANT

SAMPLES



NORTH SEA
01-3706 **P2**



NORTH SEA
02-55 **P1**



NORTH SEA
03-3 **P3**



NORTH SEA
04-3 **P3**



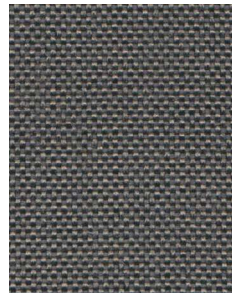
NORTH SEA
08-81 **P1**



NORTH SEA
09-23 **P3**



NORTH SEA
10-3737 **P2**



NORTH SEA
11-61 **P1**



NORTH SEA
12-4 **P3**



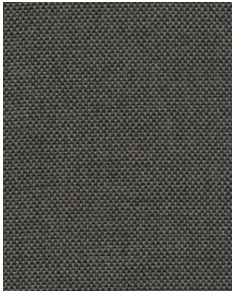
NORTH SEA
13-22 **P3**

PIETBOON

NORTH SEA

HIGH PERFORMANCE FABRICS

SAMPLES



NORTH SEA
14-10059 **P2**

PIETBOON

STORM

HIGH PERFORMANCE FABRICS

FEATURES

NR.	01-8	02-58, 03-53	04-8, 05-13	06-81	07-47	08-3906, 10-3705, 12-3758	09-24	11-75
COMPOSITION	97% PP 3% PL	83% PP 17% PL	88% PP 12% PL	83% PP 17% PL	88% PP 12% PL	100% PC	100% PP	83% PP 17% PL
WIDTH	140	140	140	140	140	140	140	140
WEIGHT	900 G/LM	460 G/LM	648 G/LM	500 G/LM	658 G/LM	356 G/LM	1022 G/LM	470 G/LM
ABRASION (MARTINDALE)	50.000	30.000	30.000	25.000	30.000	30.000	100.000	40.000
COLOUR FASTNESS	ISO 4-5	ISO 4-5	ISO 4-5	ISO 4-5	ISO 4-5	ISO 4-5	ISO 4-5	ISO 4-5
CLEANING FOR MORE DETAILS: pietboon-care.nl								
CALL TB 117	PASS	PASS	PASS	PASS	PASS	PASS	PASS	PASS
BS 5852 0	PASS	PASS	PASS	PASS	PASS	FAIL	PASS	PASS
BS 5852 1	FAIL	FAIL	FAIL	FAIL	FAIL	FAIL	FAIL	FAIL
DIN EN ISO PART I	FAIL	FAIL	FAIL	FAIL	FAIL	FAIL	FAIL	FAIL
DIN EN ISO PART II	FAIL	FAIL	FAIL	FAIL	FAIL	FAIL	FAIL	FAIL
NFPA 260	FAIL	FAIL	FAIL	FAIL	FAIL	PASS	FAIL	FAIL
WATER REPELLENT	NO	NO	NO	NO	NO	YES	NO	NO

ALL THE HIGH PERFORMANCE FABRICS ARE WATER RESISTANT

SAMPLES



STORM
01-8 **P3**



STORM
02-58 **P1**



STORM
03-53 **P1**



STORM
04-8 **P3**



STORM
05-13 **P3**



STORM
06-81 **P2**



STORM
07-47 **P3**



STORM
08-3906 **P2**



STORM
09-24 **P3**



STORM
10-3705 **P2**

PIETBOON

STORM

HIGH PERFORMANCE FABRICS

SAMPLES



STORM
11-75 **P1**



STORM
12-3758 **P2**