

INTERIOR DESIGN LESSONS

*Words: Karin Meyn – Owner & Creative Director
interior & styling at Studio Piet Boon*



About creating coziness...

At Studio Piet Boon we feel that when an interior is done well, it conveys an effortless and calm atmosphere. It is omnipresent and is therefore felt more than it is seen by the naked eye. This balance is key to our design philosophy of creating harmony between functionality, aesthetics and individuality. Having said that, any color and material can be used to add warmth and coziness to an interior in principle, as long as they are combined in the right way and are in balance. In our design we always pay attention to mindfully creating these combinations, although it is important to bear in mind that the word "cozy" doesn't mean the same thing to everyone. Therefore, we always invest a lot of time in getting to know our clients and the context of a design. As our style is defined by our curiosity and fascination with shapes and

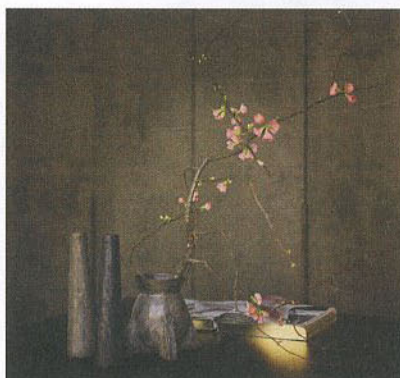
materials, we aim to use a very wide range of different objects, materials and colors in our work. We like to apply them in a layered, tone-on-tone manner to spark interest.

For us, color is a powerful communication tool when creating one of a kind design experiences. It is an aspect we incorporate very early in our design process. As we work across the globe, we believe our palettes should in essence remain fairly neutral, instilling a sense of timeless refinement and creating a subtle, understated effect and a calm atmosphere. At the same time this neutral palette is there to accommodate personal belongings, accessories, works of art and natural surroundings, acting as a platform for bright accent colors that illustrate depth and personality.

Because we carefully combine different, high-quality, rich (natural) materials and textures – our designs asked to be touched. For us attention to exquisite detail and tactility is key. Cashmere, soft cotton, silk, suede, leather, warm lush velvet, wood and natural stone are examples of tactile materials we combine within the same color scheme to add warmth in our designs. Matte and gloss, soft and hard, we look for the ultimate combination that creates an experience that is calm and at the same time an exciting with certain edginess to it. We never compromise on quality. Ultimately everything needs to perfectly add up to create a lasting positive impact.

About a lighting-plan...

Decorative lighting and lighting in general have a large influence on how



people experience an interior, perceive a space and are directed within a design. A proper lighting scheme is therefore very important, as it creates atmosphere, adds functionality and thus contributes to the success of a design. By adding or subtracting lighting you can set all kinds of moods, place the focus on specific elements and play with color. Though it might seem simple, good lighting requires a great deal of thought. It has to correspond with all the interior elements and together form a balanced whole.

For luxury lovers...

Just like "coziness", the definition of "luxury" isn't always the same for everyone. Understanding what luxury means for our clients is something we delve into with each and every project – be it a Caribbean beach villa, a metropolitan

penthouse, a hotel, or a family's Alpine chalet. For Studio Piet Boon, luxury



is foremost an effortless and timeless atmosphere where you feel comfortable and at ease within a balanced whole. Naturally there are levels of luxury and the difference in these levels lies in detailing and choice of materials used. Our designs are often permeated with richly tactile, high-quality materials and outstanding details. We also care about turning seemingly ordinary experiences into extraordinary ones. A good example is bed linen, an aspect of design that garners little attention, but that can make such a difference in someone's wellbeing. After all who doesn't enjoy slipping into a bed covered with good quality sheets. Go for Egyptian cotton with a minimum thread count of 800. The rest is subject to preference. The same rule applies to towels when it comes to creating a luxury spa & hotel experience in the comfort of your own bathroom.